

## Features

- ▶ CREE Lighting Class LED Inside
- ▶ XM-L, MC-E, MP-L LED Module Series
- ▶ RoHS compliant
- ▶ OEM/ODM Service



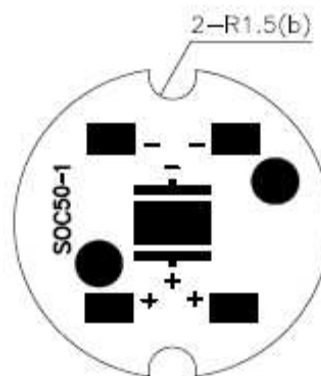
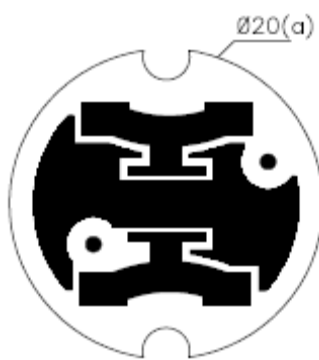
## MCPCB for CREE XM-L LED

We support MCPCB and LED assembly, not included XM-L LED.

### SOC50-1

20mm (D) x 2.1mm (T)

LED: CREE XM-L LED



ITEM	PART NO.
MCPCB	SOC50-1

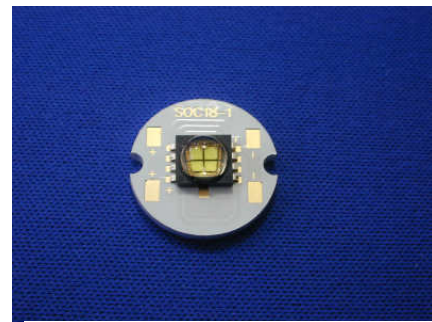
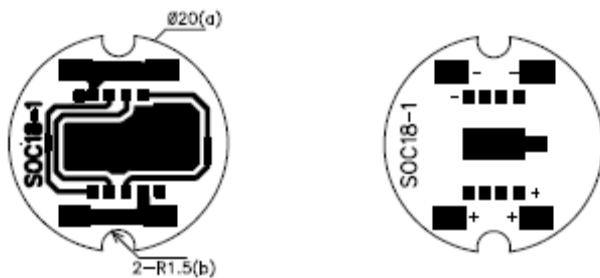
## MCPCB for CREE MC-E LED

We support MCPCB and LED assembly, not included MC-E LED.

### SOC18-1

20mm (D) x 2.0mm (T)

For CREE MC-E , 4 chips in series design



MCPCB Part No.: SOC18-1

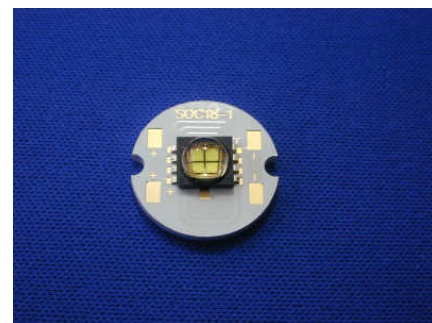
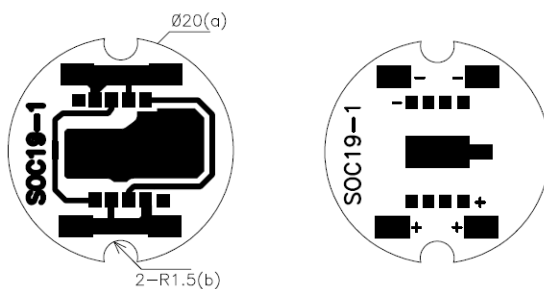


ITEM	PART NO.
MCPCB	SOC18-1

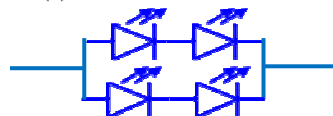
### SOC19-1

20mm (D) x 2.0mm (T)

For CREE MC-E , 2 chips in series , 2 chips in parall design



MCPCB Part No.: SOC19-1

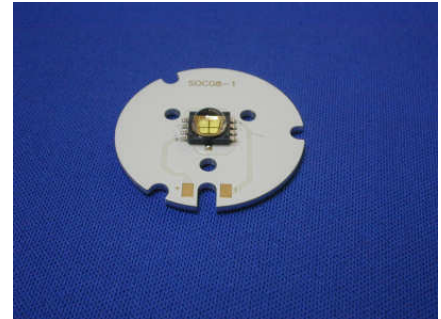
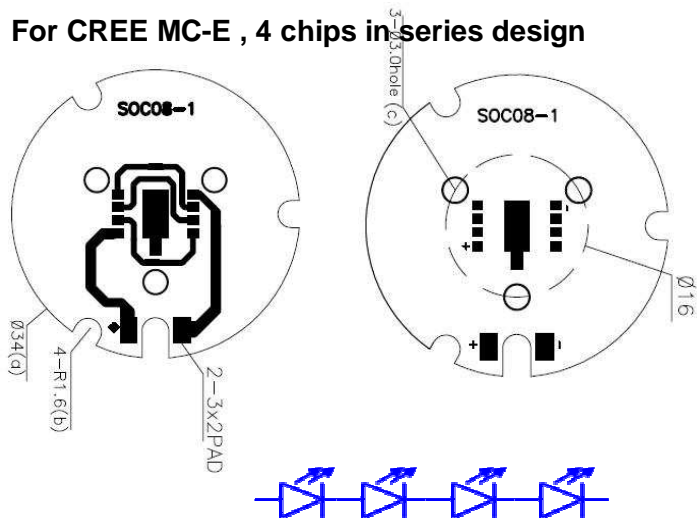


ITEM	PART NO.
MCPCB	SOC19-1

## SOC08-1

34mm (D) x 1.6mm (T)

For CREE MC-E , 4 chips in series design



ITEM	PART NO.
MCPCB	SOC08-1

## Secondary Optics Lens for MC-E LED

Viewing angle : 40°



**Part No.: Lens-L3340FC**(Viewing angle : 40°)

Diameter: 32.8mm

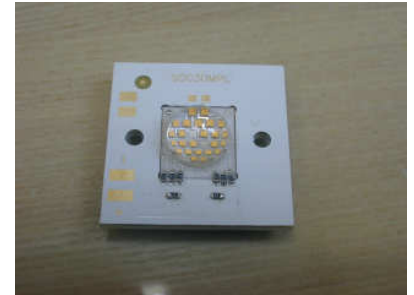
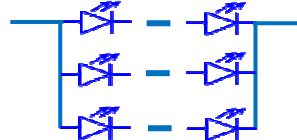
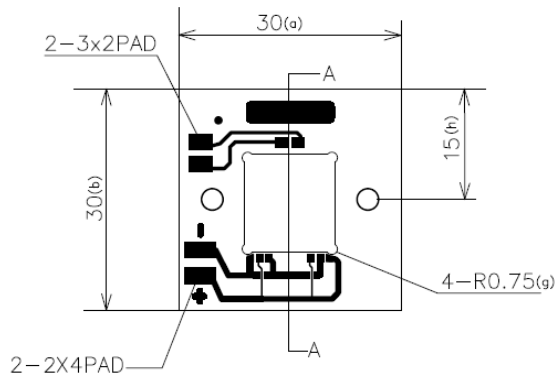
Height: 18.0mm

## SOC30MPL

We support MCPCB and LED assembly, not included MP-L LED.

Dimension: (L)30\*(W)30\*(T)2.4mm

LED: CREE MP-L



ITEM	PART NO.
MCPCB	SOC30MPL

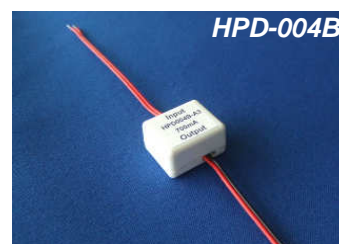
## Suitable Constant Current Driver



**HPD008B**



**HPD002B**



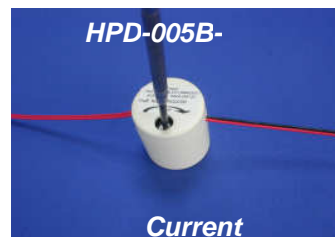
**HPD004B SERIES**



**HPD006B SERIES**



**HPD005B SERIES**



**HPD005B-ADJ**



**HPD017B**